

Mortgages with Your Family in Mind



Kiki Calumet
Executive Vice President
p: 773.305.7010
e: kcalumet@anmtg.com
kikicalumet.com



TOP 1% Mortgage Originators
in America 2012 & 2013



Northwest Chicago Historical Society

Your Neighborhood Historical Society

Newsletter January 2015

Number XXI

The Altrui Club • Lost Chicago Corners

10-Year Anniversary of this Newsletter

The Northwest Chicago Historical Society, originally called the "Jefferson Park Historical Society," started out as a committee of the Jefferson Park Neighborhood Association about 12 years ago. A dedicated group of residents were not only interested in the area's heritage but wanted to preserve important artifacts, especially those old photographs kept in a box in an attic or basement that no one had touched for decades.

The society's meetings were well attended, and residents told colorful stories about the neighborhood's past and brought in their old photos, documents and maps. The meetings were often held in historic buildings, including the Congregational Church of Jefferson Park and the former Gateway Theatre at the Copernicus Center. Because of the society's efforts, we know more about the community's founders, such as Henry Esdohr, whose house sits in Jefferson Memorial Park. The society also brought to life an interesting story on how political corruption may have played a role in Jefferson Park being incorporated into the City of Chicago. How many nickelodeons were in Jefferson Park? The society answered that question by bringing in guest speakers who were experts on Chicago's theater history.

The society eventually became its own nonprofit organization and later expanded its area of interest to the entire Northwest Side of Chicago. One of the society's more recent highlights occurred when it secured the first public tour of the Mayfair Pumping Station since security concerns closed it off to the public after Sept. 11, 2001. The society also partnered with the Jefferson Memorial Park Advisory Council to post an historical marker outside the Esdohr House.

Nadig Newspapers is proud to have covered many of the society's meetings and to have had a close relationship with the society. The history of the Northwest Side is brought to life on the front page of our newspapers many times a year thanks to the photos supplied by the society. For the past 10 years the society's researcher, Frank Suerth, has published a professional looking newsletter filled with great stories and photos. The community should be proud of the society's accomplishments. - Brian Nadig

Mission Statement:

As the Northwest Chicago Historical Society, our mission is to educate others about the history of the Northwest neighborhoods of Chicago. We will accomplish this through discussion at meetings, public tours and events, and dissemination of historical documents and photos through publications. Additionally, we desire to collaborate with others in the community to continue to maintain and preserve the history of our collective neighborhoods. By linking the past with the present and the future, we will provide awareness and create appreciation for our place in Chicago's and Illinois' history.

The Northwest Chicago Historical Society

President: Susanna Ernst (773) 725-5774
Vice-president: Dan Pogorzelski (773) 350-9414
Treasurer: Gail Weber
Recording Secretary: Robert Bank

Board of Directors:

Frank Suerth	Marketing Director	(773) 725-5774
Marilyn Ebenstein	Activities Director	
Del Norwood	Administrative Director	
Janet Taylor	Communications Director	
Walt Kowalczyk	Advertising Director	
Chuck Brown	Membership Director	
Dory Ahearn	Public Relations Director	

Keep track of what is happening at the Northwest Chicago Historical Society

Join our Meet-up Group (It's FREE)

www.meetup.com/The-Northwest-Chicago-History-Meetup-Group/

NW Chicago Historical Society

P. O. Box 30067
Chicago, IL 60630

e-mail: nwchicagohistory@sbcglobal.net

© 2015 Northwest Chicago Historical Society - All rights reserved

Membership:

\$15.00 per calendar year

\$10.00 for 65 years old and over

Website: nwchicagohistory.org

Letters

Letters may have been edited for clarity and space

Can you kindly give the name of a popular restaurant that existed on the NW side before 1940? I want to refer to it in a historic novel I am writing.

I grew up in Chicago and lived near Logan Sq. from 1931 to 1940 but was too young to remember any places like that.

Thanks.

Jack Margolis - Fort Collins, CO

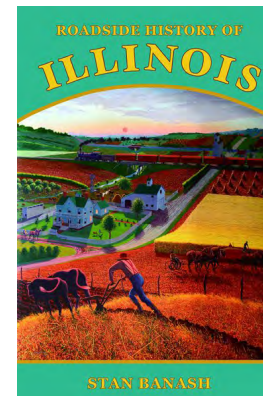
Lenard's Polish Restaurant at 1166 Milwaukee Avenue with complete Chicken Dinner for 75¢. Their specialty was Fillet a la Cracow - Polish pastry. It was in business in the 1930's & 1940's. - NWCHS

Thank you very much for having me talk before the Northwest Chicago Historical Society. I thoroughly enjoyed meeting so many of your members and others interested in learning more about the history of the Prairie State. You have my best wishes for continued success with your organization.

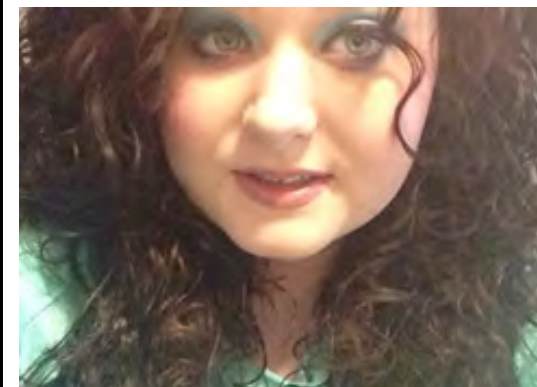
Stan "Tex" Banash - Norwood Park, IL

Thank You!

Stan Banash for sharing your knowledge on the Roadside History of Illinois at one of the Northwest Chicago Historical Society's meetings. If you missed the meeting or want to learn more about Illinois' roadside history, you can purchase Stans's book *Roadside History of Illinois*.



tastefullysimple®



Shannon Ahearn

Independent Consultant

www.tastefullysimple.com/web/sahearn1

773-558-5791

sahearn18@comcast.net

Just think of me as your own personal shopper and party planner.



Our Lady of Victory

A Parish Community in the Roman Catholic Tradition

You are invited to:
5212 West Agatite Avenue
Chicago, IL 60630
773-286-2950
www.olvchicago.org

MASS SCHEDULE

Saturday Evening Mass
4:30pm

Sunday Masses
8:30am - 10:30am

Monday-Saturday Morning Mass
7:30am

Wednesday, School Mass
8:15am During the School Year
Holy Day Masses
As Announced

Rosary M-F after the 7:30am Mass

Novena To Our Lady of Perpetual Help
Tuesday 7:00pm
in the Upper Church

1st Friday Adoration
Upper Church 8:00am-5:00pm
1st Saturday Devotion
Lower Church 10:00am-3:30pm

Holy Hour Devotion

First Sunday of month after the 10:30 am Mass

Our warmest welcome to all who celebrate with us, whether visitors, neighbors, long-time residents, or newly arrived in the Neighborhood.

Our parish family extends an invitation to all to join us as we celebrate the Sunday Eucharistic at the Lord's Table.

Our Lady of Victory offers a diverse group of ministries and organizations to fill the varied interests of our 2,500 individual members.

Our Lady of Victory School is open to all regardless of religious affiliation. Our emphasis is, of course, in the Roman Catholic Tradition. This award winning school has room for 500 students from Pre-K through 8th Grade.

Our Lady of Victory also supports a vital Religious Education Center for all ages. From three and four year-olds to seniors, we have a Religious Education for all.

Leisure time organizations are the heartbeat of Our Lady of Victory, from Scouting for boys and girls of all ages, sport activities, to our Mothers' Club, Parish Men's Club, Teen Club and including our very active Music Ministry with Chamber Choirs, Adult, Teen and special Choirs.

We welcome you to join with us in our celebration of God's Word.

Reverend Robert Fedek, *Pastor*

Letters

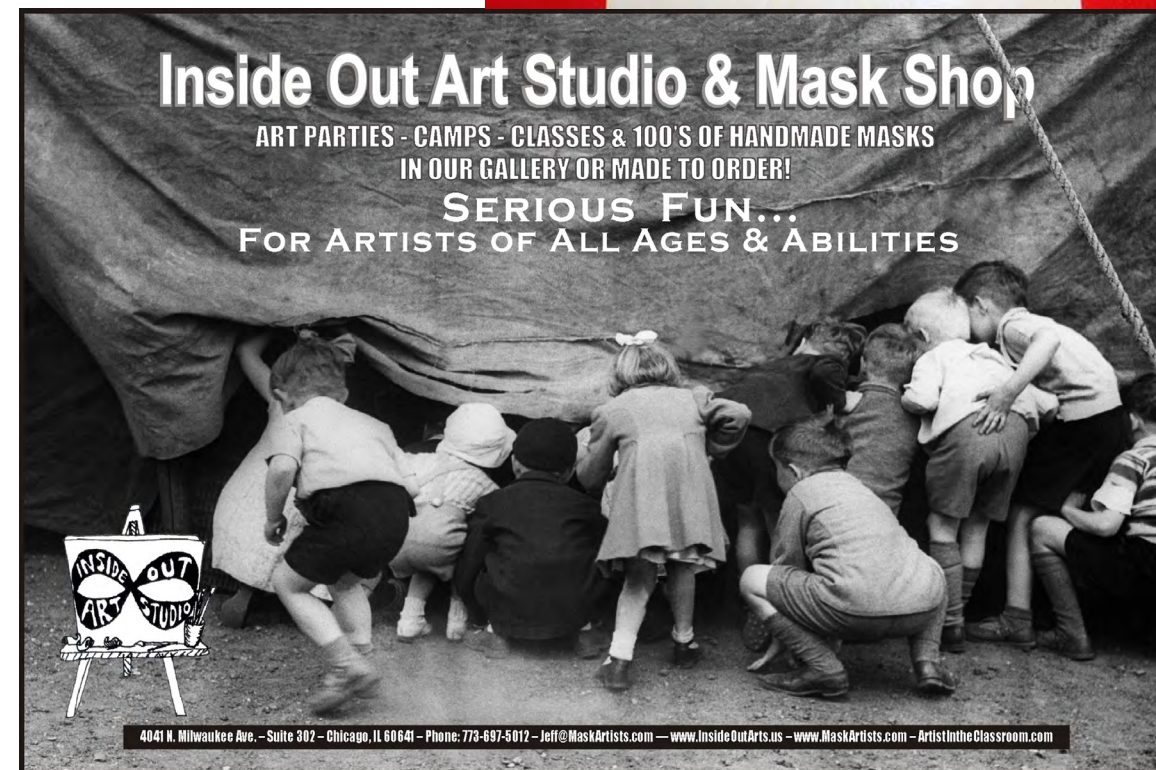
Letters may have been edited for clarity and space

Can you tell me the name of the Polynesian restaurant on Milwaukee Ave in Jefferson Park in the 1970's. There is a car dealership there. It was north of Foster or Devon on Milwaukee. I want to say it was the Hawaiian Village.

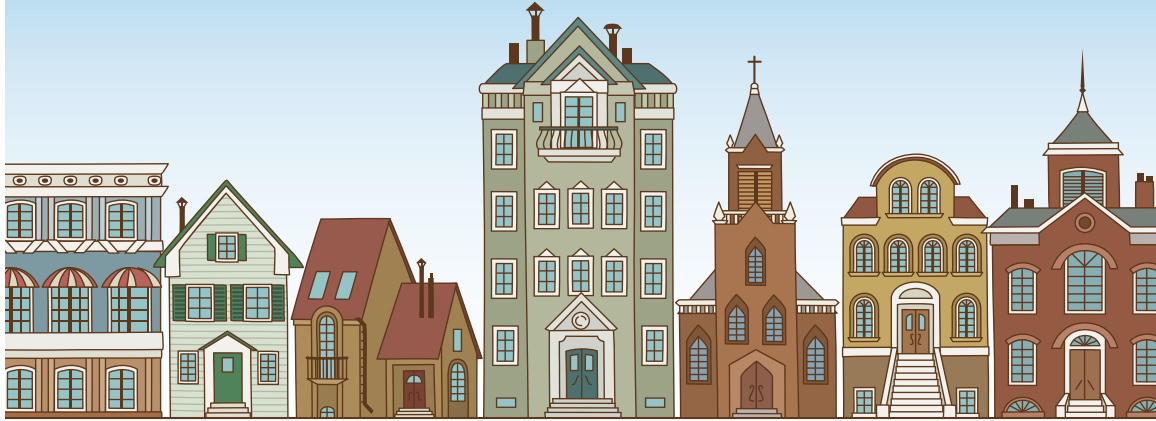
Thank you,

Tom

It was Shanghai Lil's and it was north of the old Gateway car dealership. They had a floorshow and served umbrella drinks with the buffet. They would pick people from the crowd and bring them onstage to dance with the girls. It was torn down and replaced by condos. - NWCHS



GREAT NEIGHBORHOODS



Great neighborhoods don't just happen. Great neighborhoods rely on active participation from new families as well as life-long residents. Great neighborhoods depend upon – and deserve – strong and active representation at City Hall to build upon the hard work happening in the neighborhood. Great neighborhoods look to elected officials to tackle the day-to-day issues that impact quality of life: environment, traffic, zoning, businesses development, family services. What are your concerns? What are your plans? Let's get together to discuss them – in your home, with your neighbors. Call me at 773-609-4545 to arrange a get-together. I welcome the opportunity to meet you!


John Garrido



MEET JOHN GARRIDO

FOR 45th WARD ALDERMAN

*A Strong, Independent Leader
to Protect Our Interests*

www.JOHNARRIDO.com



Paid for by Citizens for Garrido. A copy of our report filed with the Illinois State Board of Elections is available on the Board's official website (www.elections.il.gov) or for purchase from the Illinois State Board of Elections, Springfield, Illinois.

The Altrui Club

By Frank Suerth

The Altrui Club was a dynamic women's organization that spanned more than 70 years in the Jefferson Park neighborhood of Chicago. This club was a social, civil, educational and philanthropic association, started at a time when women could not run for political office or vote for that matter, this was an organized society on their terms.

The Altrui Club was organized in 1898 and the same year they joined the Illinois State Federation of Women's Clubs. They picked their club colors, "Red and White" and their club flower, "Red Carnation" and started out small with only 24 members the first year and paid \$1.00 for their dues.

Why they picked the name Altrui is not known but the word Altruism does mean, "A concern for the welfare of others; other cultures and religions with feelings of duty and loyalty with an ethical doctrine that individuals are morally obliged to benefit others. This definition most certainly does describe this club.

Founding Officers:

President	May K. Holman
Vice-President	Marie Weber
Secretary	Marie Lawrence
Treasurer	Cynthia Young

Founding Directors:

Anna T. Graham, Elizabeth L. Roberts
and Lela W. Graham

Founding Members:

Ida C. Caneron – Mrs. Archibald Caneron – 19 Gross St. (4920 Lester Ave.)
Lois E. Carpenter – Miss. Lois E. Carpenter – Milwaukee Ave.
Rose Dinse – Mrs. Paul Dinse – 1893 W. Carmen Ave. (Aprox. 5244 Carmen Ave.)
Celia H. Eldred – Mrs. Fred E. Eldred – 1941 Norwood Park Ave. (4905 Northwest Highway)
Mary R. Farnsworth – Mrs. Chas E. Farnsworth – 4112 Milwaukee Ave. (4571 Milwaukee Ave.)
Alice Goodman – Mrs. Alice Goodman – 1932 Short Place (5325 Ainslie)
Lina Glasgow – Mrs. A. M. Glassgow – 43 Higgins Road (5442 Higgins)
Emma E. Graham – Mrs. Arthur S. Graham – 28 Goodman St. (5622 Goodman St.)
Anna T. Graham – Mrs. John G. Graham – Roberts Court (Giddings St just east of Long and west of Milwaukee)
Lela W. Graham – Miss Lela W. Graham – 28 Goodman St. (5622 Goodman St.)
Maude M. Graham – Miss Maude M. Graham – 28 Goodman St. (5622 Goodman St.)
Louisa W. Gray – Mrs. Wm P. Gray – W. Carmen, Milwaukee Ave.
May K. Holmes – Mrs. Albert W. Holmes – 1866 W. Carmen Ave. (5220 W. Carmen Ave.)
Nancy D. Lawrence – Mrs. Edward Lawrence – 1886 Winona St. (5237 Winona St.)
Alice Lawrence – Miss Alice Lawrence – 1886 Winona St. (5237 Winona St.)
Marie Lawrence – Miss Marie Lawrence – 1886 Winona St. (5237 Winona St.)
Elizabeth Lawrence – Miss Elizabeth Lawrence – 1886 Winona St. (5237 Winona St.)

Annie C. Peet – Mrs. R. Emmett Peet – 16 Eastman St. (5459 Edmunds St.)
 Lela M. Peet – Miss Lela M. Peet – 16 Eastman St. (5459 Edmunds St.)
 Elizabeth L. Roberts – Mrs. Clarke Roberts – 4098 Milwaukee Ave. (4564 Milwaukee Ave.)
 Marie Weber – Mrs. Ewald Weber – 4276 Milwaukee Ave. (4808 Milwaukee Ave.)
 Mimie Wulff – Miss Mamie Wulff – 4286 Milwaukee (4822 Milwaukee Ave.)
 Cynthia Young – Mrs. Oscar Young – 1881 W. Winnemac St. (5232 W. Winnemac Ave.)
 (Denotes present day addresses)

These 24 members lived within 1/2-mile radius of the heart of Jefferson Park, an easy walk to each other's homes. Early meetings were mostly hosted in members homes. One such meeting was described in a neighborhood newspaper in December of 1903.

Jefferson Park Altrui

The history of flags of various nations proved to be a very interesting evening for the members of Altrui Club who met at the home of Mrs. A. S. Graham Thursday December 10.*

Mrs. Graham presented a paper pertained to the flags of America and France, which was followed by a paper by Mrs. Hilma Almbery relating to the flags of Denmark, Germany, Sweden and Norway.

The English, Irish, and Scottish flags were given their due attention by Mrs. Cynthia E. Young.

The papers were interspersed with music, Miss Marie Lawrence and Miss Helen Davidson singing the U.S. national song. The French national song was rendered by Miss Helen Davidson, and Mrs. Almberg favored the company with the Swedish national song. The Austrian national song was rendered by Miss Per-sis E. Young, and Mrs. Bessie Lemke gave the piano rendering of "The Watch of Rhine."

*The musical composer for the evening was "Gounod" by Mrs. Mary R. Farnsworth.
 The home was decorated very prettily with flags, and each one of the guests was presented with a flag of some nation.
 After the delicious coffee and cake, for which the ladies of the Graham household are so justly noted, had been served, Mrs. Matthews of Avondale favored the company with several exceptionally fine readings.
 The pleasure of the evening was still further enhanced by the announcement that the next meeting, which is to be held at the home of Mrs. E. R. Lawrence, Saturday, December 26, will have the added attraction to the regular program of the presence of Mrs. Carrie Jacobs Bond, who will favor the company with original reading.*

* To view pictures of the Graham house both exterior and interior, along with pictures of the Graham girls, Olive, Lela, Mabel and Maud Graham. See January, 2007 Newsletter number V – The Graham's of Goodman Street, available for a free pdf download on our website: nwchicagohistory.org/newsletters.html

By 1899, the club had grown to 37 members with 45 members in 1900. In 1901 with 48 members we see members joining from outside the Jefferson park area. Hilma Almberg and Mina Thorsen were from Forest Glen, Mamie W. Crocker from Avondale, Mary Ayer Rich from Norwood Park and Freda B. Rudnick from Milwaukee and Armitage.

In 1902 with 58 Members and still meeting in member's homes it could get crowded so a few meetings were held in the Jefferson Club House which was located on the northwest corner of Giddings Street and Long Avenue. The year 1903 found the club with 72 members with one Elizabeth L. Bassett from Clifton Park in Cleveland, Ohio. The Altrui Club chorus was also started this year with 23 members, 1904 found the Altrui Club with 77 members, now too large to meet at member's houses, all meeting were held at the Jefferson Club House with the exception of one meeting held at the Jefferson Park Congregational Church. In 1905 the club joined the Municipal Art League.

In 1906, we find the club with many more Committees; Social, Music, Philanthropic, Auditing, Press, Vacation Schools, Program, District Educational, Civic and Delegates to the State Federation. All these Committees had their own chairman and members on the Committee.

By 1910, membership has grown to 98 and the Committees had expanded to include; Library and Flower with delegates for the Juvenile Protective Association and Illinois Industrial Home For Girls.




Delightful Pastries

French Market 131 N. Clinton Street Chicago, IL 60661 (312) 234-9644	Old Town 1710 N. Wells Street Chicago, IL 60614 (312) 255-0724	Jefferson Park 5927 W. Lawrence Avenue Chicago, IL 60630 (773) 545-7215
--	--	---

Cookies, Brownies & Bars • Morning Pastries & Breads • Cakes • Mini-pastries • Savories
www.delightfulpastries.com

**Please Patronize
 Our Advertisers**



DORY AHEARN
 Independent Presenter
 773-558-5789

younique

www.youniqueproducts.com/dory
www.dorys3dfiberlashbash.com



Regular Mascara With 3D fiber lashes

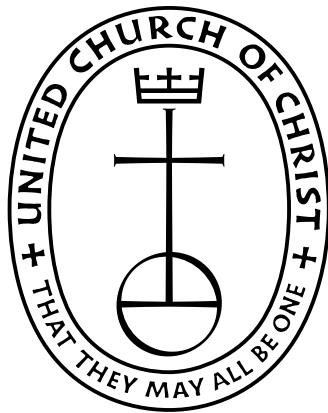
SHOP • JOIN • PARTY

*“Never place a period
where God has placed a comma”*

- Gracie Allen



God is still speaking,



The Congregational Church of Jefferson Park

5320 W. Giddings St., Chicago, IL 60630 773-725-0121

congregationalchurchofjeffersonpark.org

Pastor: Reverend Gayle Tucker

We are your neighbors and we would like to meet you

Treasures Report – 1910

Expenditures

Contribution to Industrial School for Girls	\$	5.00
Flowers		22.00
Speakers' Transportation		4.00
Postage		4.52
Spoons		4.70
Expenses for Passion Play		1.45
Delegates to Luncheon at Woman's Club		0.50
Illinois Industrial School for Girls		30.00
Calendars and Membership Cards		28.50
Piano Tuning		2.50
Expenses Reception at Church – Sept. 26, 1910		4.47
Coffee Boiler		2.65
Use of Church for two meetings		4.00
Delegate to I. F. W. C Expenses		10.00
Federation Dues		4.00
Advanced Altrui Club Chorus		7.38
Press Committee		1.17
Total Expenses		137.19

Receipts

May 17, 1910 Cash on hand		41.42
Dues from Members		148.50
Calendars		0.40
From Altrui Club Chorus: Proceeds from Fall Entertainment		25.00
Balance from District Meeting		1.51
Guest Fees		1.25
Philanthropic Committee		1.10
Total Receipts		219.18
Expenses		137.19
Balance		81.99

Nellie Groenier, Treasurer
May C Schmook
Ethel Lynn Carr



MOODY
Plumbing Inc.



- RESIDENTIAL
- INDUSTRIAL
- INSURED
- COMMERCIAL
- LICENSED
- BONDED

Jim Moody

Bus. Ph. (773) 777-1614

Fax (773) 777-6614

Michelle J Wichtendahl

Independent Consultant #182576
New Consultant Recruiter & Trainer
Wedding Registry Coordinator, Fundraiser
Coordinator, Cooking Party Planner



847-884-9462

mwcookin@prodigy.net

www.pamperedchef.com/pws/mwcookin

The Masonic Hall in Jefferson Park was used for some meetings in 1912. The dues were \$1.50 per year for each of the 125 members and guests were charged 25¢.

Around 1918, meetings were held at the Congregational Church, Beaubien School and the Jefferson Park Masonic Temple. Some dances were also held at the Jefferson Park Masonic Temple with no doubt that some members had ties with both the Masons and the Congregational Church of Jefferson Park. When the new Jefferson Park fieldhouse was built after 1930 most meetings of the club were held there but they still used the Congregational Church of Jefferson Park at times. The Wilson Park fieldhouse was also a future site for meetings.

The Altrui Club was found still going strong in 1938 under the leadership of:

Mrs. Frank Maresh	President
Mrs. Milton Meyer	First Vice-President
Mrs. Charles Boehm	Second Vice-President
Mrs. Philip Hecksel	Recording Secretary
Mrs. Herbert Anderson	Corresponding Secretary
Mrs. Harry Greene	Treasurer

Directors for One Year

Mrs. Wm. Blenke – Mrs. A. G. Anderson – Mrs. Wm. Meyers

**ARCHITECTURAL ANTIQUES
OF INDIANAPOLIS
(COLONIAL ANTIQUES)**

**CELEBRATING 35 YEARS AS
INDIANA'S PREMIER SOURCE FOR
QUALITY AMERICAN
ARCHITECTURAL
ANTIQUES!**

**OPEN MON-SAT 10-5 OR BY APPT
CLOSED SUN**

**5000 W 96TH ST, INDIANAPOLIS, IN 46268
317-873-2727 800-916-6777**

WWW.ANTIQUEARCHITECTURAL.COM

*Since 1980 we have
delighted thousands of Customers
with some of the highest quality and
most Unique Architectural Salvage
and other fine antiques to be found
in the Midwest. We maintain an
impeccable reputation by making
sure that your satisfaction is our top
priority.*

*Our inventory is vast and
ever changing. Our specialties
include Antique Lighting, restored
and unrestored, a huge collection
of antique hardware, doors, man-
tels, stained glass and Architectural
Elements. Over an acre of items for
you to see!*

*Let us know your specific
needs and we will work with you to
find the items you need. Easy ac-
cess from I-65.*

**Altrui Membership List 1938
Active Members**

Anderson, Edith (Mrs. Herbert G.) 5427 Montrose Avenue	1936	Crocker, Eleanor (Mrs. Harry) 5703 Leland Avenue	1920
Anderson, Harriet (Miss Harriet) 4835 Warner Avenue	1938	Dehli, Edith (Mrs. Louis) 4906 St. Anthony's Court	1928
Anderson, Mamie V. (Mrs. A. G.) 4835 Warner Avenue	1927	Derox, Agnes (Mrs. Earl) 5536 N. Mango Avenue	1936
Anderson, Vivian V. (Miss Vivian V.) 4835 Warner Avenue	1926	Deyo, Pearl (Mrs. Samuel) 5442 Agatite Avenue	1938
Appleton, Henrietta (Mrs. Charles A.) 3732 N. Lawndale Avenue	1918	Diedesch, Ida (Mrs. Henry H.) 5100 Windsor Avenue	1912
Arnold, Betty (Mrs. P. W.) 4233 N. Keystone Avenue	1938	Dinse, Mabel W. (Mrs. Henry) 5361 Giddings Street	1903
Barteik, Maud E. (Mrs. William C.) 4739 London Avenue	1923	Drath, Elsie T. (Mrs. Edwin A.) 5434 Hutchinson Street	1926
Beals, Florence (Mrs. Harry) 4937 Cuyler Avenue	1920	Du Breuil, Marian M. (Mrs. Henry T.) 5547 Giddings Street	1929
Bennett, Esther F. (Miss Esther F.) 5340 Windsor Avenue	1912	Dunn, Jennie (Mrs. John) 4911 Carman Avenue	1936
Bentley, Josephine (Mrs. James E.) 4448 N. California Avenue	1929	Dyer, Beatrice Thalia (Miss Beatrice Thalia) 1411 Gregory Avenue, Wilmette	1938
Benzo, Alma (Mrs. Frederick) 5243 Cullom Avenue	1923	Drer, Phoebe (Dr. Phoebe) 1411 Gregory Avenue, Wilmette	1925
Bernhardt, Agnes C. (Miss Agnes C.) 5039 N. Long Avenue	1912	Dyer, Roberta Coldren (Miss Roberta Coldren) 1411 Gregory Avenue, Wilmette	1938
Bernhardt, Martha (Mrs. Irvin) 5548 Leland Avenue	1932	Edler, Minnie (Mrs. Otto) 5456 Higgins	1938
Bischoff, Matilda (Mrs. Conrad H.) 5643 Leland Avenue	1912	Elrod, Rena (Mrs. Allen M.) 4852 Pensacola Avenue	1914
Blenke, Eleanor H. (Mrs. William) 5426 Windsor Avenue	1929	Eshelman, Emma L. (Mrs. James C.) 5005 Wilson Avenue	1912
Boehm, Emma (Miss Emma) 3839 N. Avers Avenue	1927	Eteau, Mildred (Mrs. Earl W.) 131 So. Harvey Ave., Oak Park	1923
Boehm, Rose (Mrs. Charles G.) 3638 N. Keeler Avenue	1923	Even, Bertha (Miss Bertha) 5140 Hutchinson Street	1917
Bonde, Etta (Mrs. Arthur) 6151 Nassau Street	1935	Finnegan, Margaret L. (Miss Margaret L.) 4829 Lipps Avenue	1909
Bonnesen, Carolyn E. (Miss Carolyn E.) 5271 Windsor Avenue	1911	Fletcher, Grace P. (Mrs. Marshall J.) 5408 Central Avenue	1904
Borgmeier, Eleanor (Miss Eleanor) 5100 Long Avenue	1935	Gardner, Olive Louise (Miss Olive Louise) 1925 Warner Avenue	1938
Borgmeier, Wilhelmina (Mrs. W. K.) 5100 Long Avenue	1936	Gebel, Elsie (Mrs. John A.) 6737 Oketo Avenue	1938
Borman, Alma (Mrs. Charles) 4749 N. Long Avenue	1936	Genin, Minnie A. (Mrs. Alfred J.) 5509 Higgins Avenue	1928
Brandt, Amelia (Mrs. Joseph) 5245 Strong Street	1907	Godin, Noreen (Mrs. William) 4028 N. Central Avenue	1936
Counter, Maude E. (Mrs. Albert E.) 4923 Pensacola Avenue	1912	Granger, Merle (Mrs. W.) 5415 Giddings Street	1936
Cox, Ella (Mrs. Edward V.) 1313 Vine Avenue, Park Ridge	1928	Green, Bertha K. (Mrs. Harry C.) 5149 Montrose Avenue	1918
Cripe, Lillian (Mrs. A. S.) 5438 Agatite Avenue	1938	Groenier, Margaret K. (Mrs. John) 4706 N. Laramie Avenue	1919
Crombie, Margaret (Mrs. Richard V.) 4440 N. LaVergne Avenue	1918	Groenier, Nellie P. (Mrs. August) 5266 Leland Avenue	1907



Past presidents of the Altrui Women's club will present a surprise program on Tuesday evening at 8:15 o'clock at the Jefferson Park fieldhouse. They are, left to right, seated: Mrs Ewald Webber, Mrs. Cady K. Wright, Miss Margaret Finnigan, Mrs. Allen M. Elrod, Mrs. Howard G. Smith. Standing: Mrs. Alfred G. Cook, Mrs. Murray A. Henderson. Mrs. Philip J. Barry, Mrs. Edward Marke, Mrs. Ole N. Jensen, and Mrs. James C. Moreland, and in the inset is Mrs. Henry Diedesch.

Photos and text from local newspaper articles from the 1950s Courtesy of Ron Ernst



Past presidents of the Altrui Club. From left to right: Mrs. James C. Moreland (1935 to 1937), Mrs. O. N. Jensen (1933 to 1935), Mrs. William Hohlen (current president), Mrs. John Groenier (1945 to 1947), Mrs. Edward Marke (1931 to 1933), Mrs. Ed Schoessling (1947 to 1949), Mrs. Frank Maresh (1937 to 1939), Mrs. Harry Croker (1943 to 1945), Mrs. Howard Smith (1921 to 1923). They are shown wearing gowns they wore during their terms as president. Mrs. Smith is holding a lantern. Photo taken in the Wilson Park fieldhouse in February of 1956.

Honor Altrui Past Prexies

Mrs. Alfred Borresen, membership chairman for the Altrui club, scheduled her second party of the year for prospective members for Thursday of this week in Wilson Park fieldhouse, 4630 Milwaukee, at 8 p.m. Altrui club is one of the oldest women's clubs on the northwest side, having founded in 1898. It is also one of the few women's clubs in the Seventh District which holds its meetings in the evening.

Mrs. Borresen has contacted all the past presidents of the club who still live in or near Chicago, asking them to tell the members and their guests some of the highlights of their terms in office. If Mrs. Ewald Weber, who was president in 1905-06, is able to come in from her home in Roselle, Ill., she will have many amusing stories to tell. "One that seems incredible now is about the members at the time always carrying lanterns with them when they went to meetings to light their way," Mrs. Borresen said.

Altrui Club Fetes Mrs. Weber, Mrs. H. Diedesch

Altrui club's annual spring luncheon was held on Saturday at the Tally-Ho tearoom in Park Ridge. Special honored guest were Mrs. Ewald Weber, a long-time resident of Jefferson Park, now of Roselle, and Mrs. Henry Diedesen, 5100 Windsor, who is also a Jeffersonian of many years. Mrs. R. Alfred Borresen, reelected president of Altrui club, was also present. Mrs. Weber is now residing at the home of her daughter, and is looking forward to the celebration of her 90th birthday on Aug. 10th. She is Altrui club's only living charter member. Mrs. Diedesch is an honorary director of Altrui club, having been a member of the board of directors for 43 years.

Hallarn, Martha (Mrs. Willian)	1918
5274 Windsor Avenue	
Hansen, Elsie (Mrs. Leslie)	1934
5529 Farragut Avenue	
Hecksel, Clara (Mrs. Philip)	1935
6735 Oketo	
Henderson, Anna (Mrs. Murray A.)	1907
4349 N. Long Avenue	
Hopper, Cora (Mrs. Ira O.)	1936
5216 Winnemac Avenue	
Howes, Clare (Mrs. Edwin A.)	1912
5340 Windsor Avenue	
Hueckstaedt, Viola (Mrs. Henry)	1934
5225 Lind Avenue	
Hunter, Bernice (Mrs. Wm. B.)	1938
4141 Cornelia Avenue	
Huyck, Luva C. (Mrs. Edwin)	1899
5426 Windsor Avenue	
Jacques, Clara (Mrs. George)	1917
Ingleside Station, Long Lake, Ill	
Jensen, Christine (Mrs. Ole N.)	1921
5357 Giddings Street	
Johnson, Rose (Mrs. David H.)	1938
4806 Linder Avenue	
Johnson, Sarah A. (Miss Sarah A.)	1919
3955 N. Lamon Avenue	
Jost, Dorothy (Mrs. Marshall)	1936
1033 Lindale Ave. Drexel Hill, Philadelphia, Pa.	
Kaczanowshi, May (Miss May)	1938
5259 Argyle Avenue	
Kaczanowski, Sophie (Mrs. Julian)	1918
5259 Argyle Avenue	
Kirchhoff, Christine (Mrs. Christine)	1920
4705 Milwaukee Avenue	
Kirchhoff, Gertrude (Mrs. George F.)	1935
4721 Milwaukee Avenue	
Koehler, Agnes (Mrs. Agnes V.)	1938
500 N. St. Louis Avenue	
Kuhl, Edna (Mrs. Ray)	1936
5145 N. La Crosse Avenue	
Lofgren, Lucille (Mrs. Iver)	1938
5327 Sunnyside Avenue	
Lucksinger, Anna (Mrs. Charles A.)	1921
5639 Ainslie Street	
Luedtke, Caroline (Mrs. Charles)	1934
5524 Wilson Avenue	
Madison, Helen (Miss Helen)	1937
3933 Lowell Avenue	
Maresh, Jean M. (Mrs. Frank)	1916
5840 W. Circle Avenue	
Marke, Anna M. (Mrs. Edward J.)	1921
4950 N. Lockwood Avenue	
Malloy, Mildred (Mrs. Frank)	
5543 Windsor Avenue	
Markham, Feryne (Miss Feryne)	1930
3044 Logan Boulevard	
May, Elizabeth (Mrs. John V.)	1929
4559 Milwaukee Avenue	

McBride, Jane (Mrs. John)	1938
5455 Sunnyside Avenue	
McBride, Marguerite (Miss Marguerite)	1938
711 Ashland Avenue, River Forest	
McCabe, Helen (Mrs. Leland J.)	1927
1313 Vine Avenue, Park Ridge, Ill	
Mc Farland, Sally (Mrs. L. D.)	1938
4349 No. Long Avenue	
McKeown, Irene (Miss Irene M.)	1933
5459 Windsor Avenue	
Mendelsohn, Mayme (Mrs. Paul A.)	1938
5519 W. Roscoe	
Meyers Emma (Mrs. William)	1916
5440 Gale Street	
Meyer, Maybelle (Mrs. Milton H. G.)	1930
5352 Barry Avenue	
Moisley, Luella (Miss Luella)	1903
5423 Gale Street	
Moreen, Marie (Mrs. Arthur)	1932
Plum Grove Road, Palatine, Ill	
Moreland, Izora (Mrs. James C.)	1929
5909 N. Mason Avenue	
Nelson, Helga (Mrs. Edward)	1920
5474 Gettysburg Avenue	
Nyberg, Rose (Mrs. Frank)	1926
5516 Marmora Avenue	

Pabst, Hulda (Mrs. Hulda)	1929
Los Angeles, California	
Parker, Christine (Mrs. Christine)	1930
5025 Cullom Avenue	
Peckham, Harriet (Mrs. Leith J.)	1933
3655 N. Luna Avenue	
Peters, Rose (Mrs. Alvin C.)	1929
5231 Argyle Street	
Peterson, Beatrice (Miss Beatrice)	1938
4608 N. Kenton Avenue	
Peterson, B. Honor (Mrs. B Honor)	1916
4608 N. Kenton Avenue	
Pisors, Minnie (Mrs. Frederick)	1917
5637 Leland Avenue	
Rasmussen, Margaret (Mrs. Margaret)	1937
4116 Leamington Avenue	
Rauschenberg, Louise D. (Mrs. Paul)	1903
4871 Milwaukee Avenue	
Roesler, Elizabeth (Mrs. Herman)	1917
5413 Leland Avenue	
Rosaire, Vera (Mrs. Forrest C.)	1918
4800 Milwaukee Avenue	
Rudnik, Helen (Mrs. Michael J.)	1932
4804 N. Linder Avenue	
Runden, Pauline (Mrs. Christ J.)	1907
4946 N. Lockwood Avenue	
Runzel, Ethel (Mrs. Raymond H.)	1918
6052 Navarre Avenue	
Rusk, Wanda M. (Mrs. Joseph T.)	1929
5243 Argyle Street	
Russell, Marian (Mrs. Perry)	1916
5413 Higgins Avenue	
Schaefer, Lillian (Mrs. Oscar)	1918
5529 Leland Avenue	
Schewe, Alma (Mrs. Alwin J.)	1906
4953 Belle Plaine Avenue	
Schmelzle, Alice Hayes (Mrs. Henry Jr.)	1916
4749 N. Linder Avenue	
Schmelzle, Edna (Mrs. Louis J.)	1931
5617 No. Miltimore Avenue	
Schmitt, Leona (Mrs. Theodore P.)	1925
4732 N. Laramie Avenue	
Schoessling, Jewel (Mrs. Edw. H.)	1938
4674 N. LeClaire Avenue	
Shabino, Charlotte (Mrs. Alvin)	1938
5375 Lawrence Avenue	
Sheehan, Evelyn (Mrs. Harold T.)	1938
4530 N. Knox Avenue	
Smith, Minnetta B. (Mrs. Howard G.)	1912
5003 Berteau Avenue	
Smith, Minnie (Mrs. Minnie)	1921
5302 Windsor Avenue	
Smith, Sadie Mrs. Sadie)	1932
1041 N. Mason	
Sok, Lois (Mrs. Adam)	1937
4914 Argyle Street	
Swart, Mary (Mrs. Joseph H.)	1919
5310 Leland Avenue	

Taylor, Agnes (Mrs. J. E.)	1938
4707 N. Leamington Avenue	
Warne, Grace (Mrs. George A.)	1918
5120 Pensacola Avenue	
Warner, Helen (Mrs. Lozier)	1927
6005 Newburg Avenue	
Weber, Marie (Mrs. Ewald)	1898
5375 Lawrence Avenue	
Weber, Martha (Mrs. Earl C.)	1938
5144 Lovejoy Avenue	
Westhoff, Catherine (Miss Catherine)	1922
2870 Elston Avenue	
Whittier, Frances (Mrs. A. G.)	1932
5355 Giddings Street	
Wheaton, Doll (Miss Doll)	1917
5355 Giddings Street	
Wiebe, Bertha (Mrs. George)	1937
5509 Giddings Street	
Wojciechowski, Lillian (Mrs. William)	1930
5032 N. Long Avenue	
Wolke, Sarah (Mrs. Morris)	1919
5512 Wilson Avenue	
Wrase, Marie (Mrs. William A.)	1918
5411 Giddings Street	
Wright, Persis (Mrs. Cady K.)	1899
5538 Leland Avenue	

Look 10-15lbs thinner with the right bra.

Dot Adcock

Bra Fittings Done RIGHT!
Join My Team!!!
 Cell: 847-370-9677
 Home: 847-623-9677
 braparamedic@yahoo.com
 www.myessentialbodywear.com/DOT

essential bodywear, llc
underneath it all is ebw

Nancy McAleese

Tupperware

Consultant

630-607-4965

www.Mytupperware.com/nancy62

Mention this AD for shipping rebate offer

Shaklee
 Creating Healthier Lives™
 Independent Distributor

Denise Carrera
 Health and
 Wellness Consultant

*Dedicated to health, environment and opportunity.
 Providing pure products for all aspects of life.*

630-664-4552
 newlifeldt18@gmail.com
 www.UbWealthy.myshaklee.com

Associate Members

Miss Beulah Mason Pontiac, Illinois

Honorary Members

Mrs. Charles Austin 6576 Lakewood Avenue
 Mrs. George L. Winter Upland, California
 Miss Marie Lawrence Wheaton, Illinois
 Mrs. A. D. O'Neill 5933 W. Circle Avenue
 Mrs. Amelia Beaven 3542 N. Crawford Ave.
 Mrs. William Moisley 5056 N. Long Avenue
 Mrs. Margaret Walsh 4749 N. Linder Avenue
 Mrs. Oscar Young 5538 Leland Avenue
 Mrs. George Hayes 1068 Catalpa Avenue
 Mrs. John H. Rietman Cincinnati, Ohio

By this time, the club had affiliations with five organizations with delegates to each of the following:


Illinois State Federation of Women's Clubs 1898
 Municipal Art League 1903
 Seventh District Federation 1911
 Traveler's Aid Society 1931
 General Federation of Women's Clubs 1936

By 1938, most neighborhoods had a women's group associated with it. The Belmont (and Central) Women's Club, Irving Park Women's Club, Wicker Park Women's Club, Hermosa Juniors, Edison Park Women's Club, Mayfair Women's Club, Kelvyn Park Women's Club, and Norwood Park Women's Club to name a few. But few have had the history associated with it as the Altrui Club of Jefferson Park. The following are a list of the organization's past presidents.

Altrui Club Presidents

Mrs. Albert W. Holmes 1898-1905
 Mrs. Ewald Weber 1905-1906
 Mrs. James L. Wright 1906-1907
 Mrs. Charles E. Carr 1907-1909
 Mrs. Cady K. Wright 1909-1911
 Mrs. Mary E. Conn 1911-1912
 Mrs. G. L. Winter 1912-1914
 Miss Margaret L. Finnegan 1914-1916
 Mrs. Q. DeWitt Peake 1916-1917
 Mrs. Allen M. Elrod 1917-1921
 Mrs. Howard G. Smith 1921-1923
 Mrs. Henry Diedesch 1923-1925
 Mrs. Alfred G. Cook 1925-1927
 Mrs. Murray A. Henderson 1927-1929

Mrs. Philip J. Barry 1929-1931
 Mrs. Edward J. Marke 1931-1933
 Mrs. Ole N. Jensen 1933-1935
 Mrs. James C. Moreland 1935-1937
 Mrs. Frank Maresh 1937-1939
 Mrs. Milton Meyer 1940-1941
 Mrs. Edwin C. Huyck 1941-1942
 Mrs. Harry Croker 1943-1945
 Mrs. John Groenier 1945-1947
 Mrs. Edward H. Schoessling 1947-1949
 Miss Catherine Westhoff 1949-1951
 Mrs. Leslie W. Beaven 1951-1953
 Mrs. Alfred Borresen 1950's
 Miss Adelaide Harrold 1962-1963
 Mrs. Roy Rogers 1972-1973
 Mrs. J. William Hohlen 1974-1975



JOHN G. MULROE
 STATE SENATOR
 10TH LEGISLATIVE DISTRICT

6107B N. Northwest Highway
 Chicago, IL 60631
 773-763-3810
 EMAIL: senatorjohnmulroe@att.net

The Altrui Club Committees were expanded immensely by 1938. The following had a chairman with a great many members on the each Committee.

American Citizenship and Law Observance • American Home • Civil Service and Legislation • Conservation • Courtesy • Educational • Gardens • Indian Welfare • International Relations • Literature • Motion Pictures • Music • Park Ridge School for Girls • Press • Public Health and Child Welfare • Social And House • Public Welfare (Philanthropy) • Radio • Ways and Means

Elective Committees: Calendar • Membership • Program

Special Committees: Auditing • Budget • Revisions

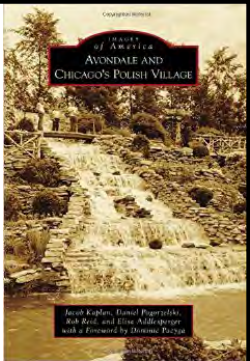
Besides all these Committees they had a 25-member chorus in 1938. There was also associated with this club the Altrui Juniors that was organized in 1930. The Altrui Juniors members were made up of the daughters of Altrui Senior Club members or friends of the junior members. Their age was sixteen to twenty-five and unmarried. They would have to be sponsored by a senior member and approved for membership by the board of the senior club. No doubt the women wanted to approve the kinds of girls their daughters were associating with while grooming future leaders for their club. The Altrui Juniors had the privilege of attending any regular meeting of the senior club but no right to vote.

**Altrui Club Juniors
 Membership List 1938**

Anderson, Olive 4835 Warner Avenue	Groenier, Bettye 4706 Laramie	Schewe, Jeanette 4953 Belle Plaine Avenue
Burke, Jane (Neice) 632 Roscoe Street	Hayes, Margaret Jean 4749 N. Linder Avenue	Taylor, Ethel 4707 Leamington Avenue
Croker, Mildred 5703 Leland Avenue	Kaufman, Eleanor (Moreland) 5833 Moody Avenue	Weber, Ercilla 5129 Milwaukee Avenue
Deyo, Vivian 5334 Agatite Avenue	Kirchhoff, Elfrieda 4721 Milwaukee Avenue	Wiebe, Charlotte 5509 Giddings street
Dudle, Edith (Maas) 5535 Luna Avenue	Krueter, Bertha 3335 Springfield Avenue	Honored Guest for the Club Year
Granger, Vera 5415 Giddings Street	Manthey, Mabel 4129 Marmora Avenue	Thorstensen, Florence (Beals) 2626 Hoyne Avenue
Granger, Virginia 5415 Giddings Street	Hajdic, Jean (Rasmussen) 4116 Leamington Avenue	

Thank You!

Jacob Kaplan and Dan Pogorzelski for sharing your knowledge on Avondale and Chicago's Polish Village at one of the Northwest Chicago Historical Society's meetings. If you missed the meeting or want to learn more about this northwest side neighborhood, you can purchase their book *Avondale and Chicago's Polish Village*.



What's next for your child?

Pre-School thru Grade 8

We provide a nurturing and safe environment where students grow and acquire the skills needed for success. Our dedicated faculty, excellent curriculum, modern facility and small class sizes (one class per teacher, no double grade classes) help achieve a positive educational experience.

High School Prep Program

Is your child prepared for acceptance into the top high school? Ours are!

Pre-School thru Kindergarten

3, 4 & 5 year old program
Monday - Friday Full or Half Days

Call or stop in today for a personal tour or see our website to learn more.

Phone 773.736.1196

Email office@stjohnschicago.org

Web stjohnschicago.org

Twitter [@stjohnsluthchgo](https://twitter.com/stjohnsluthchgo)



Eagle's Nest – Extended Day Care

Childcare is offered before school from 6:45am and after school until 6pm every school day

Now accepting registrations for 2014 - 2015 school year



St. John's Lutheran School

Empowering. Enlightening. Enriching.

**\$500
NEW FAMILY
TUITION
DISCOUNT**

2014 - 2015 school year

- New family only
- One tuition discount per family
- Other restrictions may apply
- Call for details

Are you an active member at a Christian Church?

Call today to see how to qualify for an **additional \$950.00 discount!**

In addition to holding Christmas Parties every year they also had a Gentlemen's Night, which was a special program like maybe a dance. Annual picnics were also held every year most often at Whealan Pool in Caldwell Woods, where husbands and children could partake in the festivities.

In the spring of 1964, the local neighborhood paper the Nadig Jefferson Park Press shows the Altrui Club still going strong with the following announcement:

The Board of directors of the Altrui Women's club will hold its regular monthly meeting at the home of Mrs. Margaret Rasmussen, 4116 Leamington on Thursday, April 2. Returning from Florida will be Mrs. Rasmussen, International Relations chairman, and Mrs. A. Harris Culver, 4941 Carman, American Home chairman, back from Arizona is Mrs. Ruth Peterson, 445 Wellington, Publicity chairman.

The Altrui's Literature committee will meet at 8 pm Thursday, April 16 in the Avis Inn, 8201 Higgins Road, Park Ridge, Mrs. Harriet Beaven will chair the meeting. Margaret Bourke White's autobiography, "Portrait of Myself," will be reviewed by Miss Adelaide Harrold.

A card party will be sponsored by the Education committee at 7:30 pm, Thursday, April 23 in the Wilson Park fieldhouse, 4630 Milwaukee.

Sometime in the 1970's, the Altrui Club had its last meeting. Why did it close after almost 80 years of history? Did it merge with another women's organization? It is not known why; other neighborhood women's clubs were still in existence. But most likely, there were fewer women willing to step up to a leadership roll. The club ran its course and was soon forgotten.



All that is left to remind us of this dynamic women's organization is a small plaque located at the northeast corner of Jefferson Memorial Park in front of the fieldhouse. This plaque commemorates War World I Veterans from Jefferson Park and was dedicated by the Altrui Club (most likely) in the 1930's. It was a contributing resource for getting the Thomas Jefferson Memorial Park listed on the National Register of Historic Places. In 1999, the Chicago Park District added the word "Memorial" to the park's name. Undoubtedly, this plaque was instrumental in the renaming of the park.

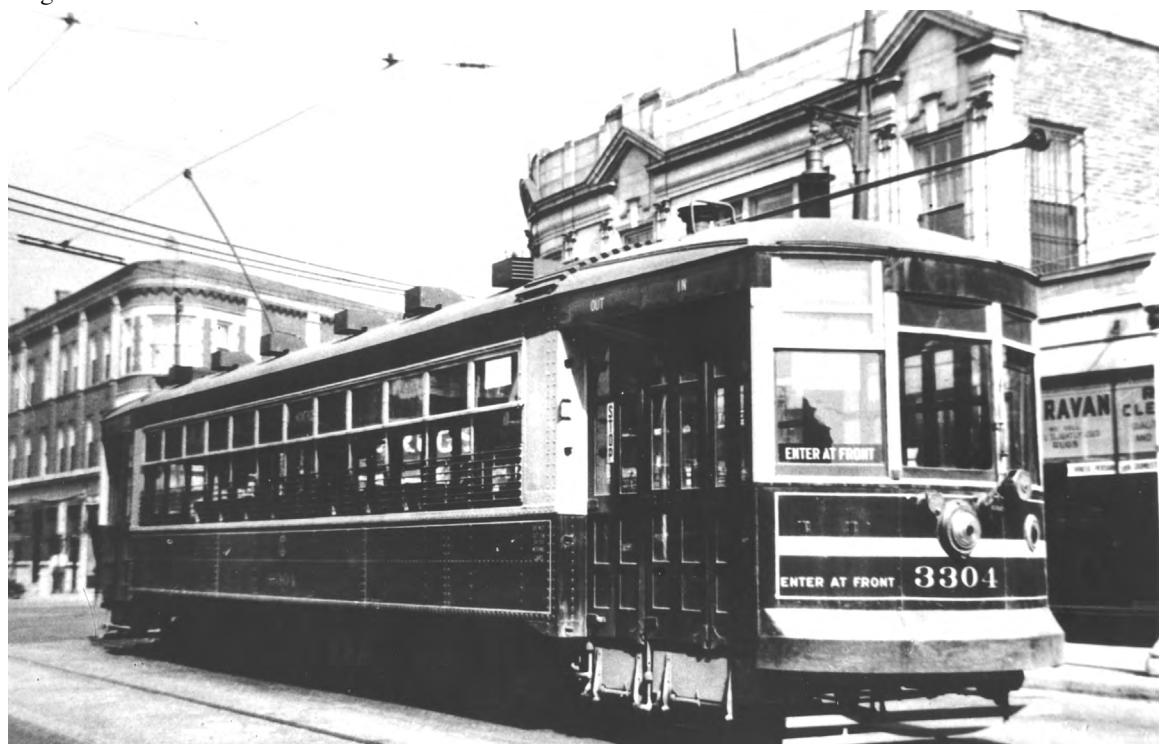
Lost Chicago Corners

by Frank Suerth

In the days when Chicago retail districts were developed, the corners of major street intersections played an important role for shopping and community interaction. The buildings on these corners, along with most other retail buildings, were constructed adjacent to the sidewalks, with no front easements. The corner buildings were generally a little larger and more elaborate in design. Because these establishments could be viewed and accessed from two major streets, they were more desirable.

In the middle of the twentieth century, oil companies also took notice of these intersections and decided they would make excellent locations for gas stations. They would have two entrances for cars, one on each street. In turn, our pedestrian friendly majestic business corners began to disappear. In the late twentieth century, many newer businesses without respect for the history of urban neighborhoods began to buy up corner lots, tear down existing buildings, and construct major parking lots on the corners in front of their establishments. Often businesses were more concerned about expanding their business rather than preserving the original character of the neighborhood.

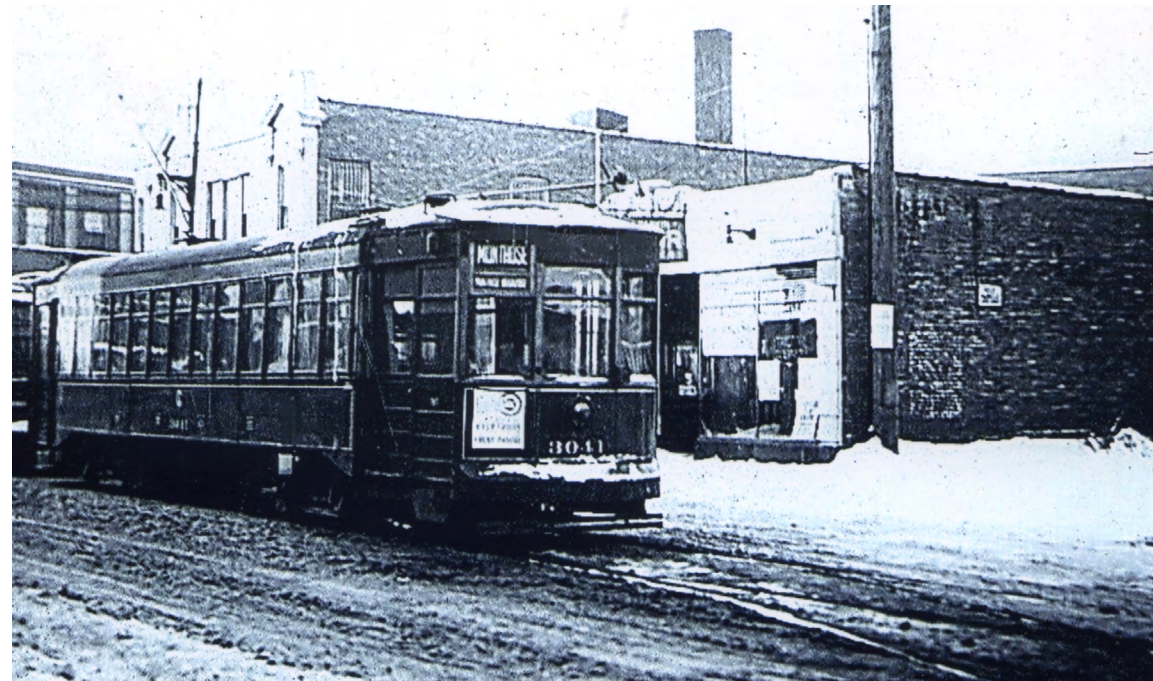
While many of these intersections have been destroyed, we are fortunate to have saved the character of the intersection Milwaukee and Montrose. A little over a decade ago, the beautiful structure on the south-east corner was a candidate for the wrecking ball. The plans were to create another nondescript parking lot with a drug store. Due to community activism and protestation, the building still stands as an anchor in our neighborhood.



The intersection of Milwaukee & Montrose. All buildings in the background are still standing. This was the west end of the line for Montrose Streetcars.



Photo taken from Milwaukee and Montrose looking east down Montrose. All buildings in the background are still standing. Photo taken on July 28, 1946



North side of Montrose Avenue just east of Milwaukee Avenue.



South bound Milwaukee Avenue Streetcar at Milwaukee and Montrose.



Trolley buses replaced the streetcars on Montrose Avenue and on all other city streets. This photo was taken at the end of the line at Montrose and Narragansett across the street from the Dunning State Hospital in 1959. These buses are waiting their departure times to begin their eastbound trips on Montrose to Broadway. Off-street loops such as this one were occasionally built to turn streetcars, but were more commonly provided for turning trolley buses (and later motor buses). A number of them still exist today and are used by present day buses at the end of their runs. This location today would be totally unrecognizable and has been replaced with a small strip mall.

Carpets of Highwood

Neil Glicksberg - Owner

4300 W. Montrose Ave.

Chicago, IL. 60641

Office: 773-283-0100

Fax: 773-283-3533


carpetsofhighwood@amal.com


www.carpetsofhighwood.com

Carpeting • Hardwood Floors • Vinyl Flooring

Ask About Our Eco-Friendly Products & Services!

Carpets of Highwood has been creating better living environments for homeowners, business owners and commercial professionals for over 35 years. From interior decorators to walk-ins, Carpets of Highwood eliminates the headaches of flooring while providing top notch service and products. Carpets of Highwood also offers hardwood flooring, fiber flooring and vinyl floors on top of our huge carpet selection. Let our experience and selection make your next project a success.

 @WeCarpetChicago

 www.facebook.com/carpetingandflooring

www.ExhibitorsFlooringXperts.com

Residential • Commercial • Exhibitions • Special



Carpets of Highwood
Exhibitors Flooring Xperts

NADIG PRESS Newspapers REPORTER JOURNAL

Serving Northwest Chicago & Suburbs Since 1940

773-286-6100

Brian Nadig

Publisher

4937 N. Milwaukee Avenue

Chicago, Illinois 60630-2191

Fax 773-286-8151

www.nadignewspapers.com



Noreen Lundin

Independent Demonstrator

2638 N. 75th Court

Elmwood Park, IL 60707

Phone: 708-456-2426

Mobile: 773-848-5151

nmlundin@aol.com

In 2014, the Northwest Chicago Historical Society lost a treasured member and dedicated volunteer, Harold "Hal" Jenkins. While he did not live on the Northwest Side of Chicago, close friends introduced him to the organization and the history of the area. He became active in the society and helped us find direction as we moved to reach a new, incremental, demographic. One of his most critical contributions was the design and maintenance of the NWCHS website, which brought us a new presence and an increased audience, leading to broader membership and furthering our educational goals. Without him, the organization would never have been able to find the solid grounding we have today. While he did not live within the city limits, we often saw him in the community, attending Mass at Our Lady of Victory, taking in the bands at Jeff Fest, or just talking about his next project in a bungalow back yard. Hal is now part of our history, but he will forever be respected, admired, and loved for what he contributed to all those he knew (and didn't know) on the Northwest Side.



Ray's Quality Painting

Quality paintwork at affordable prices...

Professional interior and exterior painting
 20 yrs experience
 Fully insured • References available
 Find us on Yelp
www.yelp.com/biz/rays-quality-painting-chicago



Ray J Rokicki - Owner

rayload@comcast.net • 773.330.1271

*Services include: Interior painting
 Drywall/water damage repairs
 Exterior powerwashing/sealing/staining
 Wrought iron fence painting
 Porch paint, restoration and repainting*

Shhh...don't tell anyone!

(Greenfield is the best kept secret in custom cabinetry.)



If you want your kitchen to live as well as it looks, Greenfield Custom Cabinetry is your best option. My family has been in the Kitchen & Bath Industry for 3 generations and I'm an Old Irving Park resident. If you desire fresher thinking in design, contact me.

- **Kitchens**
- **Bathrooms**
- **Built-in Bars**
- **And beyond**



Karla Kregel
312.644.4466
GreenfieldCabinetry.com
Karla@Kregel.com

Greenfield 

Luxury within reach